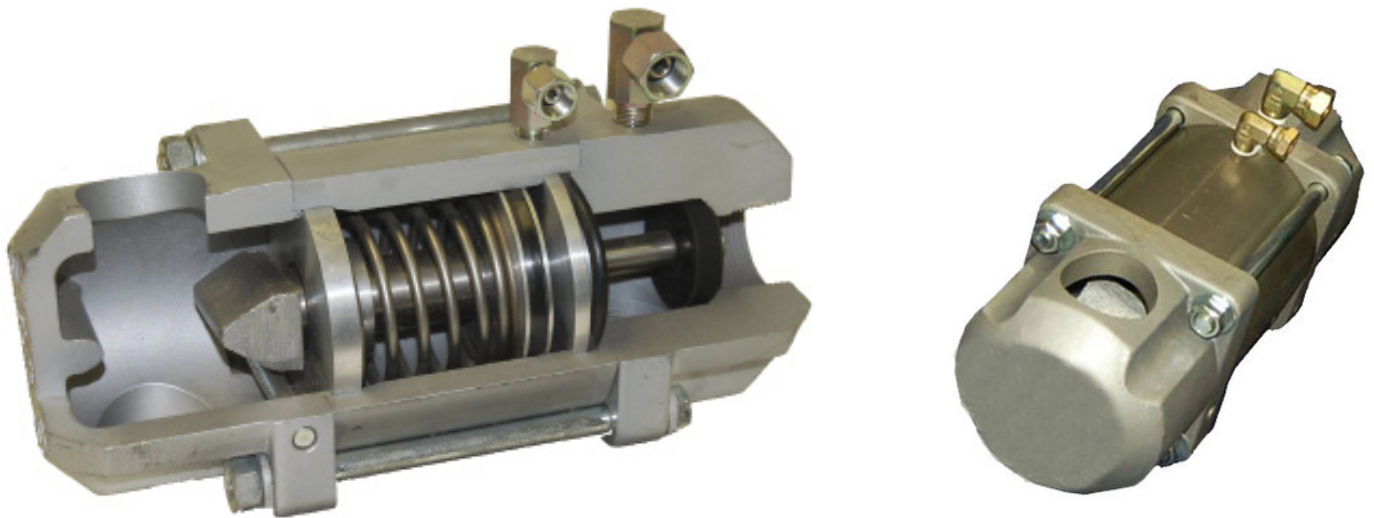


ACV - AIRBLAST COMBO VALVE

Control Valve



The Airblast Combo Valve is a normally closed, self sealing, fail-safe valve that combines the functions of the air inlet valve and blowdown valve, eliminating premature failure of the blowdown system. It is controlled with either pneumatic or electric remote controls. When the deadman control is pressed, the Combo Valve's unitized piston assembly instantly shifts, opening the air inlet and pinching the blowdown hose closed, starting the blasting operation. None of the usual wear or failures found in other blowdown systems can occur with the Combo Valve.

The Airblast Combo Valve eliminates the need for abrasive traps, expensive plungers and diaphragms that can require frequent, unscheduled and costly downtime. The blowdown hose can be replaced in just a few minutes, and any service or repair can be safely performed without removing the complete valve. A large internal air passage minimizes pressure loss common to other systems.

Features

- Rugged, non-corrosive body
- Twinline hose connection
- Unitized position assembly
- Blowdown hose pinch ram
- Large internal passage for improved blasting productivity

AIRBLAST COMBO VALVE - assembly

Part no.	Decription
6094000	ACV - Airblast Combo Valve 1¼"

AIRBLAST COMBO VALVE - Parts

Item	Part no.	Description		Qty
01	6094100	Cap		1
02	6094200	Pinch ram		1
03	6094300	Upper rod guide		1
04	6094400	Seal (upper rod)	*	1
05	6094500	Spring		1
06	6094600	Bolt, ⅜" x 6"		4
07	6094700	Cylinder		1
08	6094800	O-ring (shaft)	*	1
09	6094900	Snap ring	*	1
10	6095000	Seal (lower rod)	*	1
11	6095100	Piston		1
12	6095200	Shaft		1
13	6095300	Piston seal	*	1
14	6095400	Nut, ⅜"		4
15	6095500	Lower rod guide		1
16	6095600	O-ring (lower rod guide)	*	1
17	6095700	Base		1
18	6095800	Valve plug assembly	*	1
19	6096000	Vent, ⅛"		1
20	6096100	90° Swivel, ⅛" x ⅛"		1
21	6096200	90° Swivel, ¼" x ¼"		1

* Not sold separately, only as part of repair kit 6096400.

